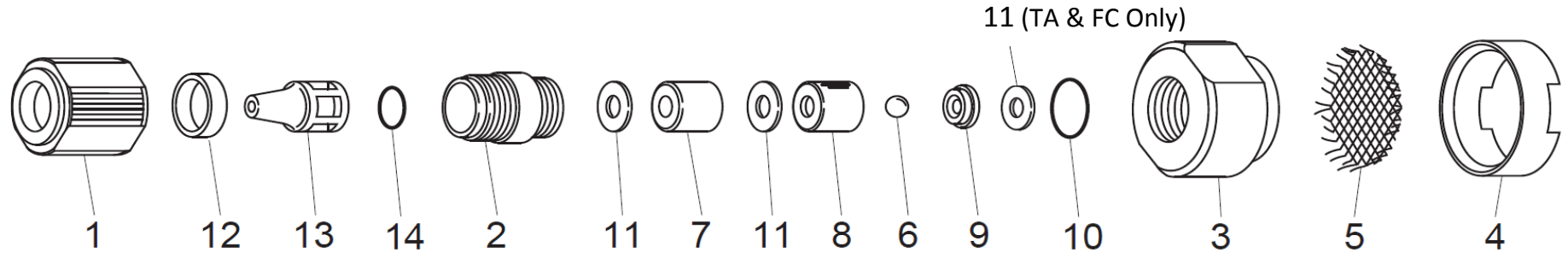


FSN-PVDF Series Foot Valves 1/2" Tubing Exploded View



1/2" Tubing Connections

Item	Qty	Description	Material	FSTCN-8U	FSTEN-8U	FSTAN-8U	FSCN-8U
				Part ID	Part ID	Part ID	Part ID
1	1	Nut, Coupling, FLEXCON, 09-36	PVDF	EH2363	EH2363	EH2363	EH0837
2	1	Housing, Valve, FLEXCON, 1/2"	PVDF	EH2360	EH2360	EH2360	EH0427
3	1	Body, Foot Valve, FSN Series, 1/2"	PVDF	EH3092	EH3092	EH3092	EH3092
4	1	Retainer, Strainer, FSN Series	PVDF	EH1172	EH1172	EH1172	EH1172
5	1	Strainer, Foot Valve, ETFE	ETFE	EH1028	EH1028	EH1028	EH1028
6	1	Ball, Valve, 0.375"	CE	EH0120	EH0120	EH0120	EH0120
7	1	Spacer, Foot Valve, 1/2"	PVDF	EH1173	EH1173	EH1173	EH1173
8	1	Guide, Valve, 0.375"	PVDF	EH0352	EH0352	EH0352	EH0352
9	1	Seat, Valve, 0.375"	FKM	EH0119	----	----	----
			EPDM	----	EH0125	----	----
			PCTFE	----	----	EH0593	EH0593
10	1	O-Ring, P16	FKM	EH0122	----	----	----
			EPDM	----	EH0127	----	----
			AFLAS	----	----	E00201	----
			PTFE	----	----	----	EH0355
11	(*)	Gasket, Valve, 0.375"	PTFE	EH0354 (2)	EH0354 (2)	EH0354 (3)	EH0354 (3)
12	1	Clamp, Tubing, FSN, FLEXCON, 1/2"	PVDF	EH3098	EH3098	EH3098	----
13	1	Adapter, Tubing, FLEXCON, 1/2"	PVDF	EH2370	EH2370	EH2370	----
			FKM	EH2341	----	----	----
			EPDM	----	EH1585	----	----
14	1	O-Ring, P9	AFLAS	----	----	E00178	----
			----	----	----	----	

†NOTE: For NPT style Foot Valves, ITEMS #1, #12, #13 & #14 are not used, and #2 is changed out with NPT fitting. Contact Customer Service for #2 part number.